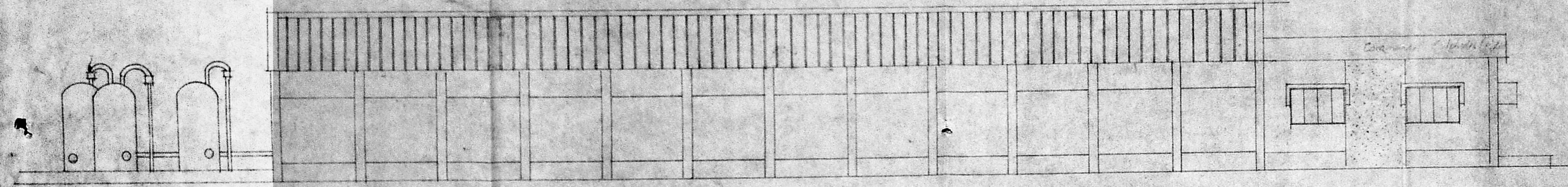
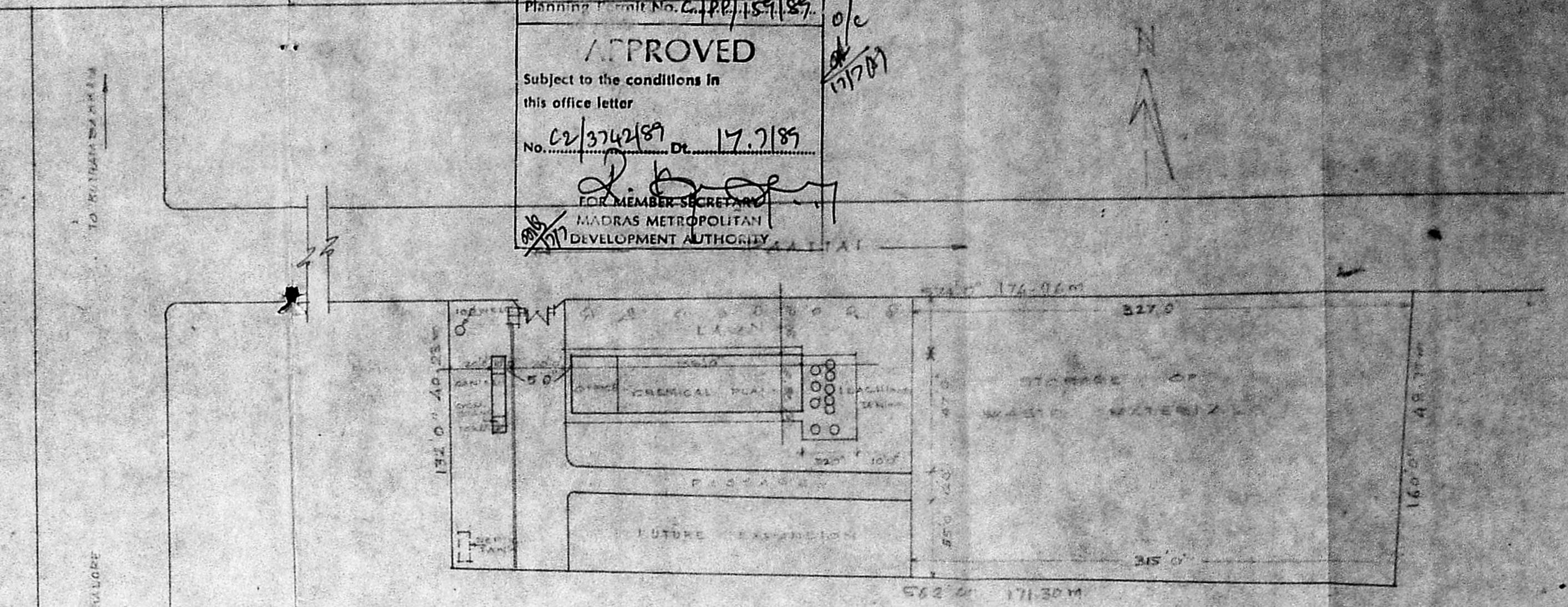


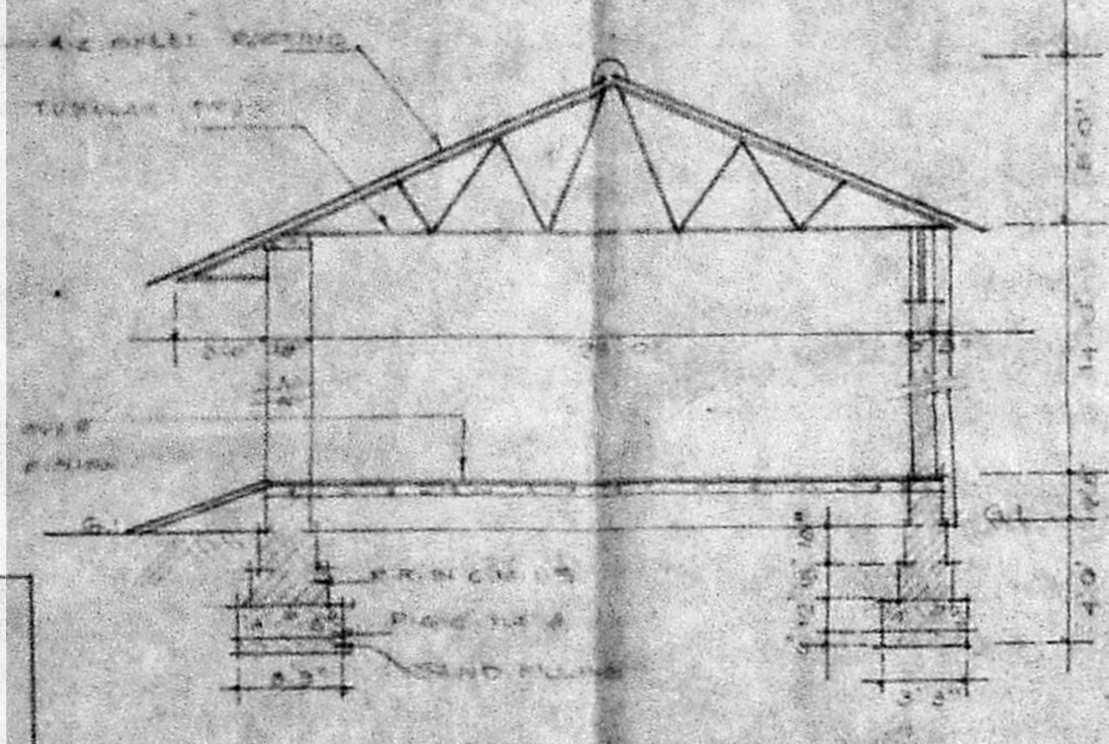
Planning Form No. C/10/15/189
APPROVED
 Subject to the conditions in this office letter
 No. C/1374/189 Dt. 17.7.189
 FOR MEMBER SECRETARY
 MADRAS METROPOLITAN
 DEVELOPMENT AUTHORITY



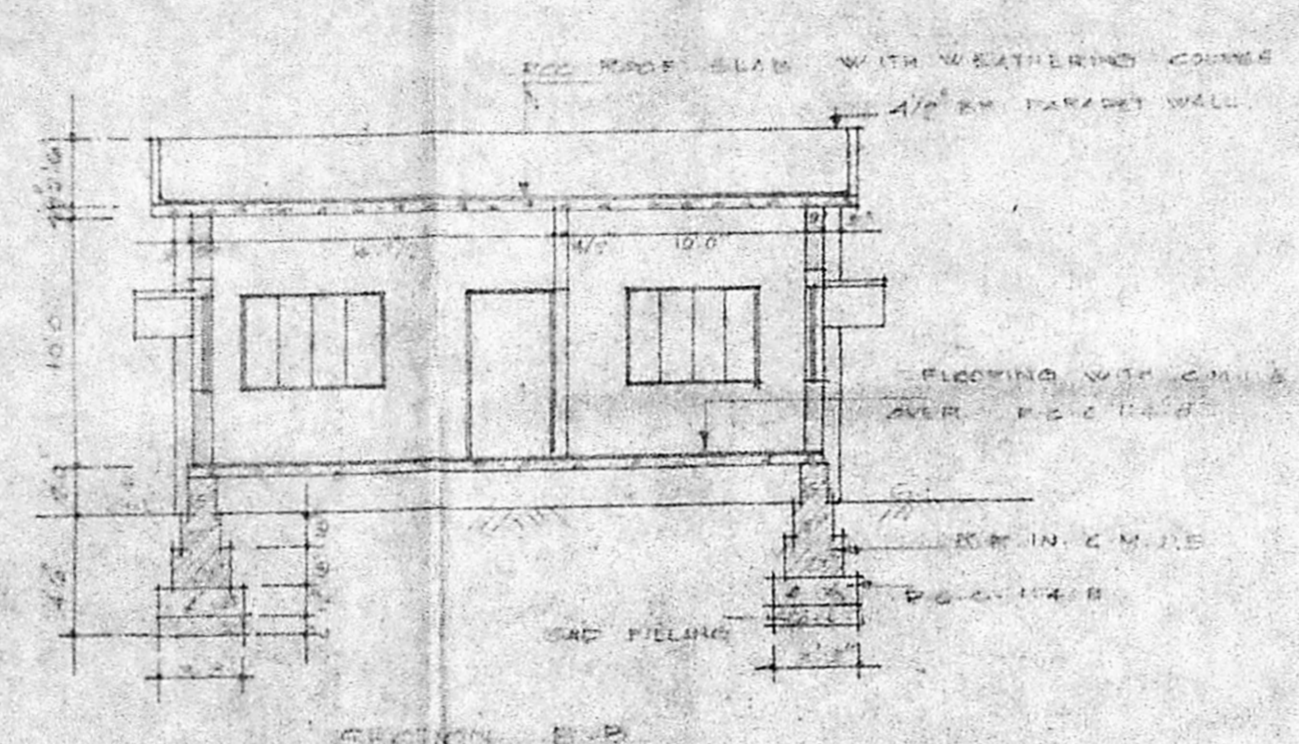
IRON ELEVATION (LOOK NORTH)



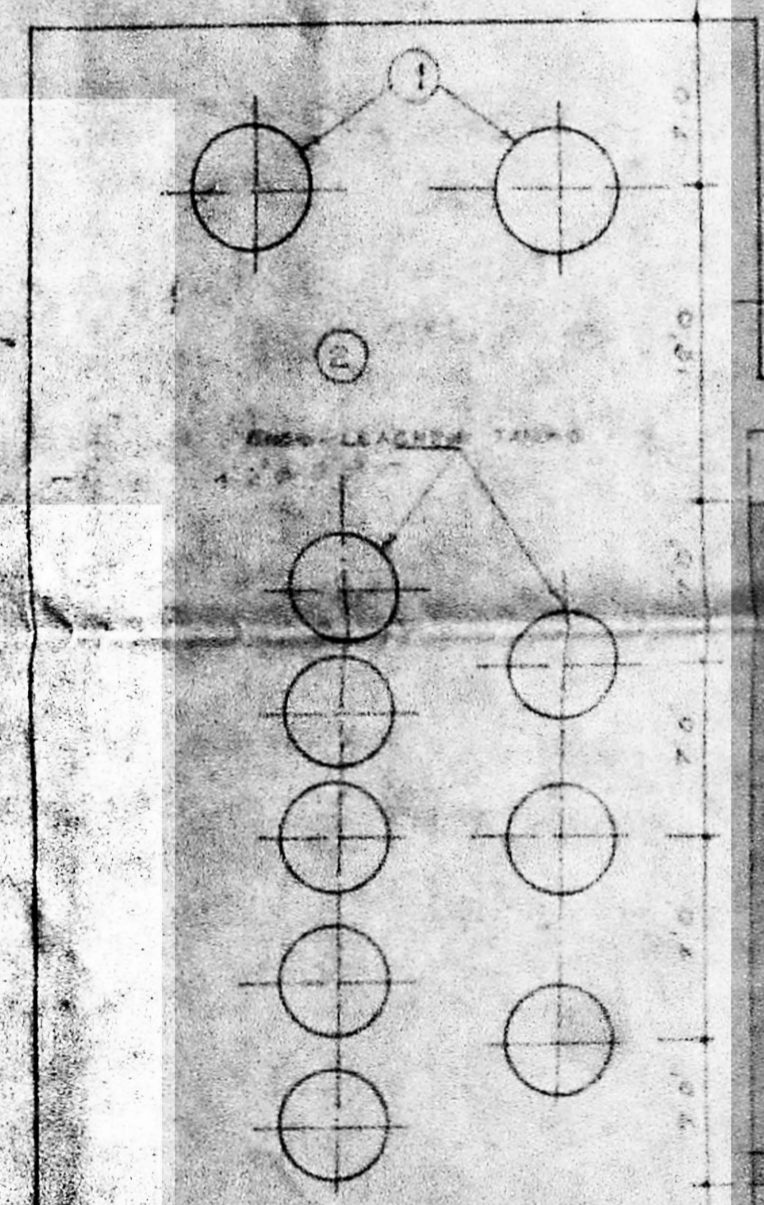
SITE PLAN



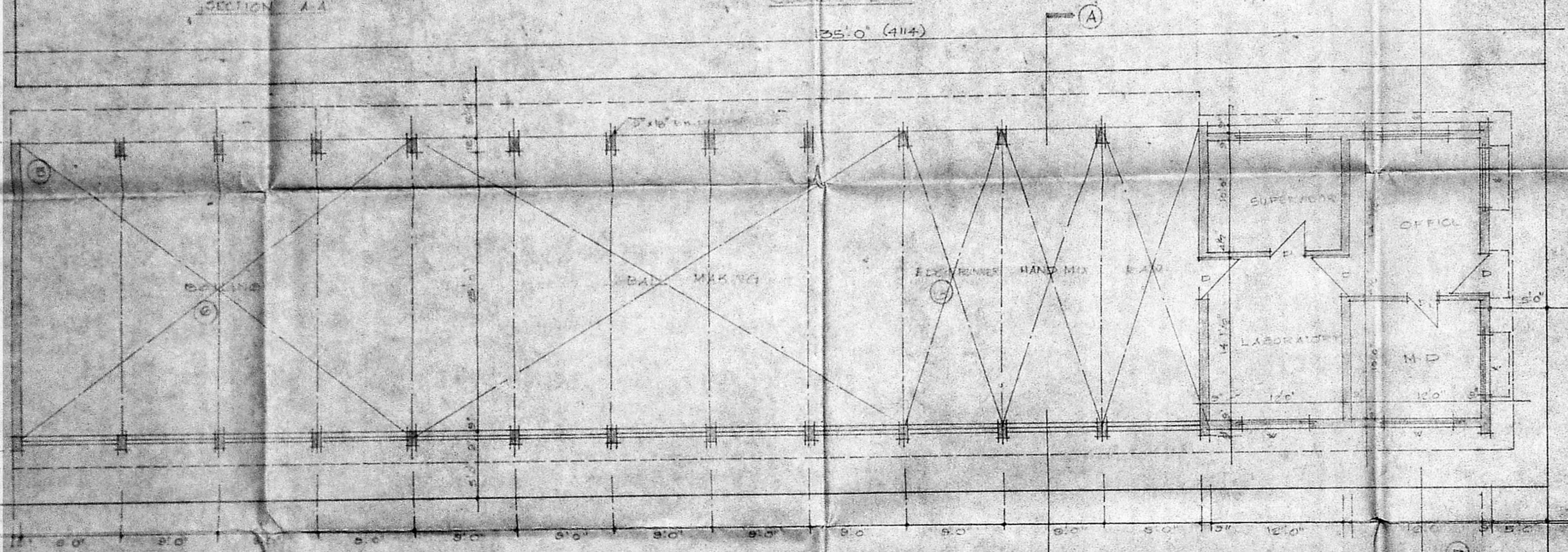
SECTION A-A



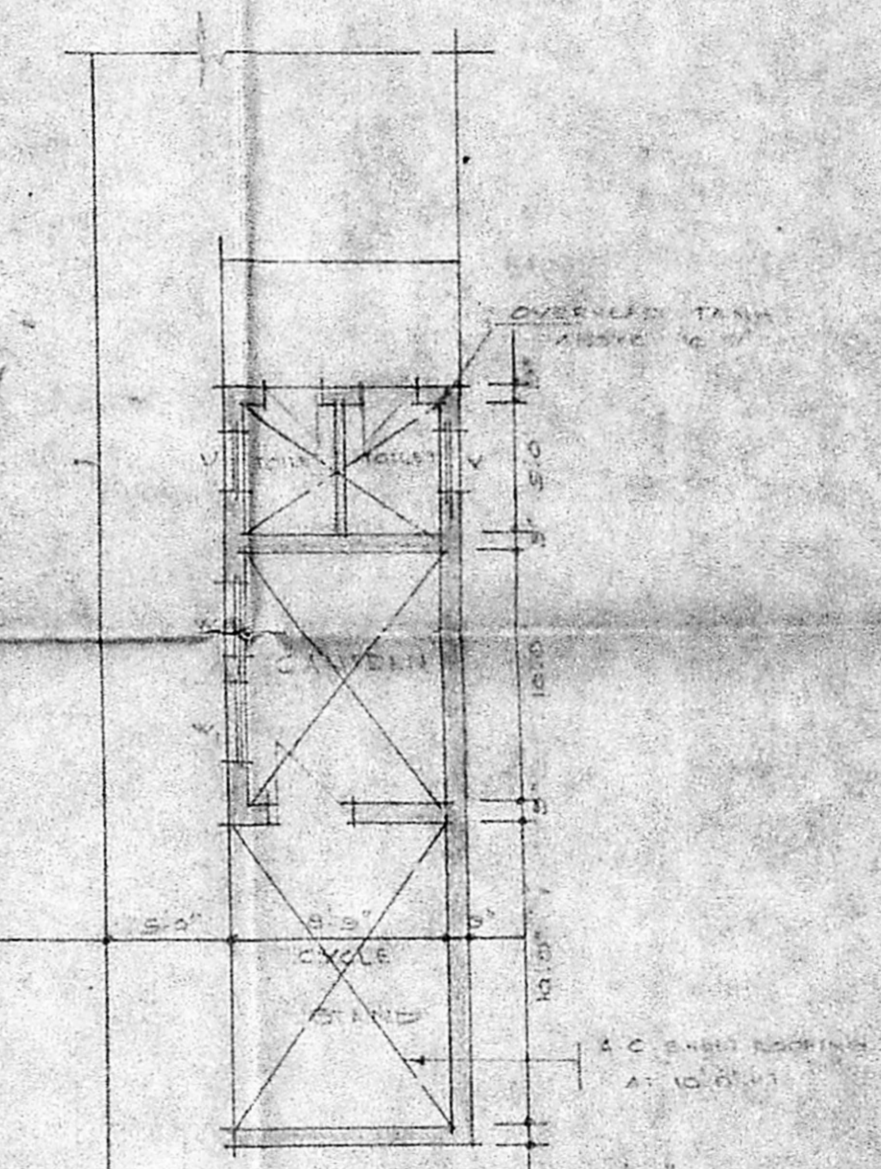
SECTION B-B



LEACHING TANKS



PLAN (GENERAL ARRANGEMENT)



PROPOSED CHEMICAL PLANT FOR COROMANDEL
 SULPHIDES (P) LTD. AT KUTHAMBAKKAM VILLAGE AT
 S.NO. 820/18/1A & 1B PICHAMALLE TOSHI PALAYAT CHEMMALPET DIST

SCALE: 1/800

SCHEDULE OF JOBS

P	TW DOOR	2	2HP
E	TW DOOR	2	2HP
F	TW DOOR	2	2HP
W	TW WINDOW	4	2HP
X	TW WINDOW	2	2HP
Y	VENTILATOR	1	2HP
SING. MACHINERY		NO.	HP
1	FURNACE	2	2HP
2	LEACHING TANKS	4	2HP
3	EDGE RUNNER	1	75HP
4	WATER PUMP	1	2HP
5	FLAYER	1	5HP
6	BOILING	3	2HP
TOTAL		18	125HP

For COROMANDEL SULPHIDES (P) LTD.
 [Signature]